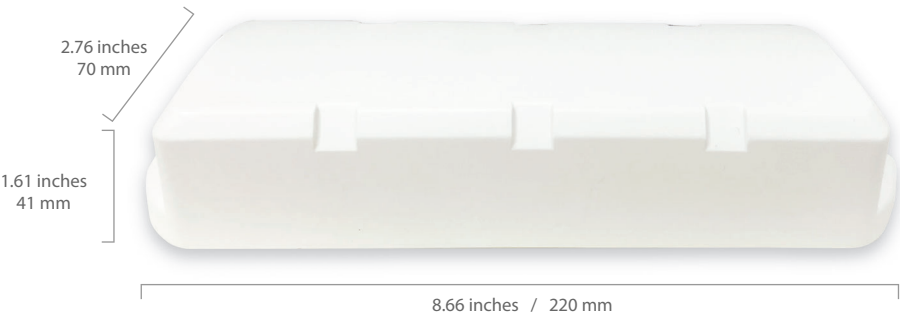


Specifications

Connectivity	
Modem	3G Global modem
SIM Card Size	Micro SIM (12 x 15 mm)
Redundant SIM Slots	2x redundant SIM Slots
GSM Antenna	Internal cellular antenna
Hardware Features	
Power Source	Rechargeable lithium battery / C-size battery x 4
Power Consumption	Sleep current 200 µA (depending on set up)
Battery capacity	6900 mAh
Enclosure	Outdoor IP67 All-Weather
Mounting	Screw holes and strap slots
Antenna	Embedded GPS and cellular antenna
Dimensions	8.66 x 2.76 x .161 inches / 220 x 70 x 41 mm
Weight	255 grams (exclude batteries)
Operating temperature	-40° – 149°F / -40° – 65°C
Humidity	10% - 80% RH non-condensing
GPS Tracking	
GPS Module	High sensitivity assisted GPS receiver, 72 channels
GPS/GLONASS	Concurrent GPS/GLONASS



Features

Routes Live map Route history	Reports Asset daily trip report Trip summary report Assets daily usage report Assets hourly usage report Assets list report Report auto email service	Assets Assets list Device list
--	--	---

Ordering Information

Product Code	Product Name	Description
TKR-3G-5V-6K	GPS Tracker	GPS tracker with 3G global modem, 2x redundant SIM slots, 6900 mAh battery / C-size battery
TKR-LC-01	GPS Tracker Cloud	Service license for GPS Tracker, annual service subscription for GPS Tracker IoT cloud service



GPS Tracker

With Cloud-Based AnyTracker Software

PEPXIM



✓ **Manage Assets and Track All Fleet via One Pane of Glass**



✓ **New Generation Cloud-Based Geo-Fencing Management**



✓ **Flexible and Extensible Battery Management System**

Introducing the Pepxim GPS Tracker! This battery-powered device features two redundant SIM slots, allowing for unbreakable connectivity, so you can see all your GPS information instantaneously and in real time.

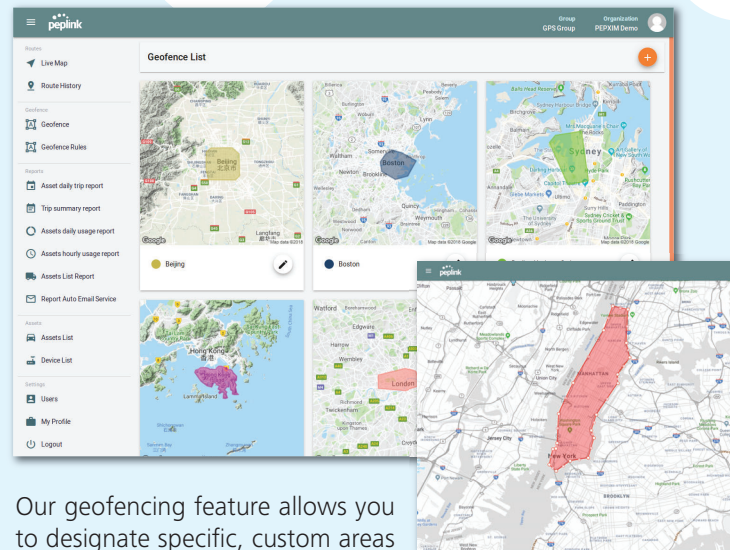
Unlike with some other GPS devices, there is no worry about the Pepxim GPS Tracker wearing down your vehicle’s battery. The device is fully self powered, via four C-size batteries, or a rechargeable lithium battery. With the rechargeable lithium

option, you’ll enjoy up to six months of battery life, plus you’ll be able to see how much battery power your device has remaining in the mobile app or browser.

Pepxim’s cloud-based GPS software goes beyond simply pinpointing the location of your fleet’s vehicles. You’ll be able to take full advantage of it’s geofencing features, as well as program when you want the device to be in a power-saving mode to extend battery life.

Cloud-based AnyTracker

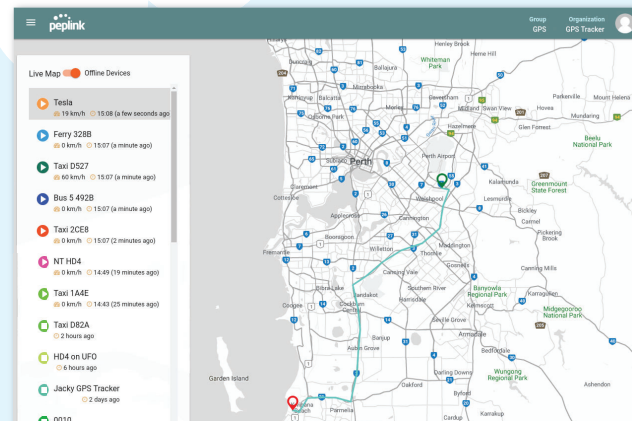
Easy to Manage Geo-Fencing



Our geofencing feature allows you to designate specific, custom areas on the map, and choose an action for the device to take when it moves into, or out of, any of these areas. For instance, a truck rental company that wishes to charge a certain rate for their vehicles being used in one area, and a different rate in another, will be able to not only see which area the vehicle is in, but also configure notifications for when the truck crosses from one area to another.



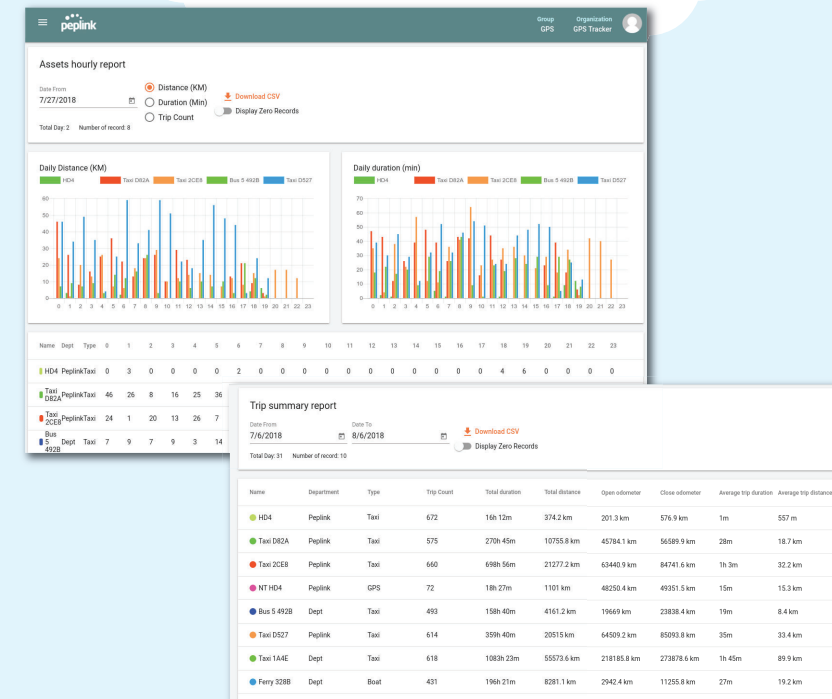
Cloud-Based Device Management



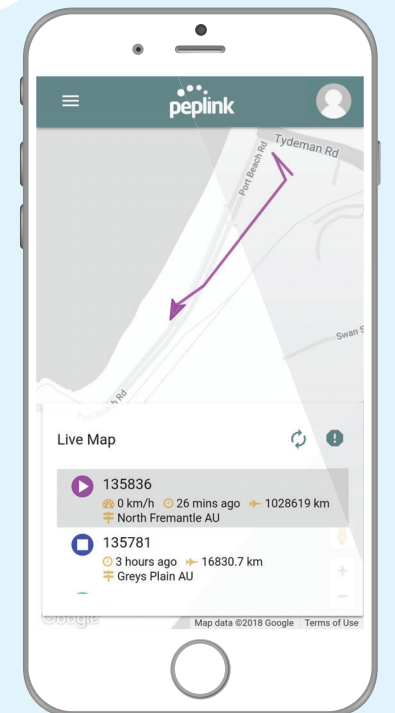
GPS tracking information can be especially valuable for emergency and/or public service vehicles. With Pepxim's cloud-based GPS software, the operators in the vehicle no longer need to report their position verbally, leaving them free to drive safely and/or (in the case of firefighters, ambulances, etc.) focus on their job at hand.



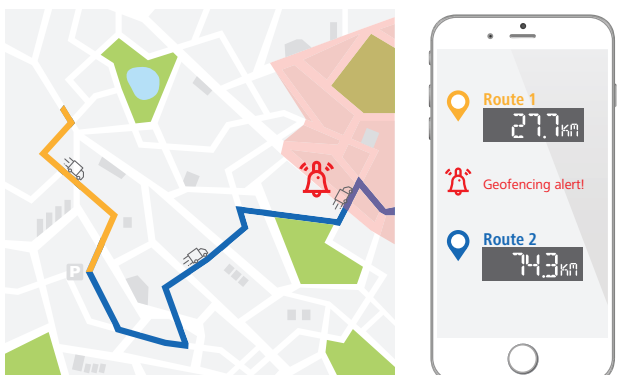
Reporting Dashboards



Mobile Friendly Display



Truck Rental Companies



Emergency / public service vehicles



2 major modes



On-Trip Mode

When the GPS Tracker is in On-Trip Mode, it will continuously upload GPS data to the cloud in real time, where our cloud-based reporting dashboard can translate the information and give it to you in useful, easy to understand ways such as reporting speed, distance traveled, trip duration, and more.



GPS data



Speed



Odometer



Distance



Duration



Power Saving Mode

To conserve battery life, the device (when not in active On-Trip Mode) will cache its GPS data offline for retrieval later, rather than constantly uploading straight to the cloud in real time.



Battery level
(for rechargeable battery only)



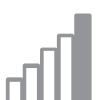
External power
connect state



Temperature



ISP name,
EC/IO



Cellular signal